



Cedar Flooring Rounds

(Formerly Tree Cookie Flooring)

#3902

Installation Instructions

Please open and inspect all items upon receipt. If you have any questions or concerns, please contact us immediately.



Quality Commitment

Thank you for your shared commitment to connecting children with nature and your support of children's life-long learning. Nature Explore is dedicated to providing quality, research-based educational materials for your outdoor spaces, as well as outdoor classroom design services and educator workshops.

Our natural products are field-tested by trained educators who observe children using them in play—focusing on safety, educational-value and versatility—prior to being offered in the Resource Guide. Our natural products, such as wooden instruments, tables or balance beams, are hand-crafted by trusted professionals who support our shared mission. All natural products are constructed of materials carefully selected for functionality, safety and durability.

We encourage you to contact us with questions or for more information on our natural products and services. If inquiring about a past or existing order, please have your order number handy (Ex: SO90001234) so we may answer your questions and provide additional information as needed. **All of our warranty, return and exchange policies can be found online or sent by request. Please contact us at service@natureexplore.org or 1-888-908-8733.**

All items created by and manufactured exclusively for Nature Explore are done so in accordance with all relevant and applicable safety standards and recommendations as set forth by the U.S. Consumer Product Safety Commission and ASTM International. Be sure to consider additional regulations that may be unique to your site.

How to Install Tree Cookie Flooring

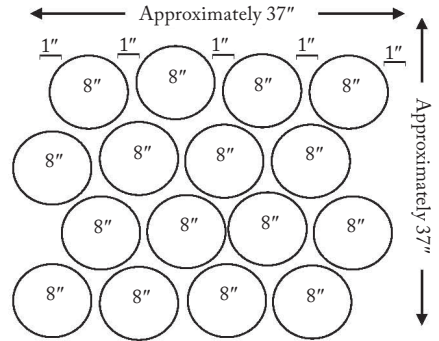
Skill level: Advanced

Installing Tree Cookie Flooring is similar to installing a brick or flagstone pavers. If you have no experience in either of these areas, it can be a challenging project. The instructions below are *general* instructions, which should help you create a beautiful area. Please consult with local experts prior to starting.

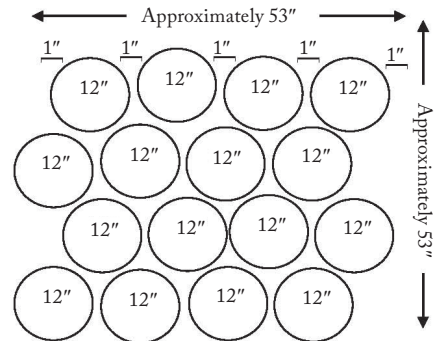
Coverage:

Each set of Tree Cookie Flooring contains 16 – 2.5" Tree cookies ranging in diameter from 8" to 12". Coverage area can vary widely between 9 and 19 sq. ft. depending on the shape of the cookies, the shape of the area, and the size of your joints.

Nature Explore cannot guarantee size, shape, appearance, dimensions or exact coverage due to the uniqueness of nature and natural products. Depending on the polymeric sand you use, the joints should be between 0.5" and 1". **Always follow all instructions on the polymeric sand packaging.**



16-8" diameter Tree Cookies will cover approximately 9.5 square feet.



16-12" diameter Tree Cookies will cover approximately 19.5 square feet.

How to estimate how many sets of tree cookie flooring you will need:

1. Determine Area (example: 210 sq. ft.)
2. **Add 10%** (example: $210 + (210 \times 10\%) = 231$)
3. **Divide by 10** (assume that each set will cover 10 sq. ft.)

Area + (Area x 10%) / 10 = # of sets of Tree Cookie Flooring

example:

$210 \text{ sq. ft.} + (210 \times 10\%) / 10 = 23.1$ Sets of Tree Cookie Flooring

Tree Cookie Flooring is NOT to be used as surfacing under and around playground equipment that requires protective surfacing in accordance with ASTM F1292. Tree Cookie Flooring should ONLY be used as surfacing under and around equipment that requires a child to be standing or sitting at ground level.

Tools Needed:

1. Tamper or Vibratory Plate Compactor
2. Spade
3. Shovel
4. Tape Measure
5. Push Broom
6. Hammer or Drill
7. Saw
8. Hose
9. Level

(more advanced tools will ease and speed installation)

Materials Needed: (Not included)

1. Spray Paint *optional*
2. 2x4 Boards or Paver Edge (to create frame) *optional*
3. Stakes
4. Rope or String
5. Unfiltered Limestone "Crush and Run" (or similar substrate for drainage) 6"-10" depth
6. Concrete Sand (same consistency as Limestone base) 1.5" depth
7. Polymeric Sand Mix (1 - 50 lb. bag covers ~10 square feet)
We recommend Techniseal HP Polymeric Sand
8. Water

(exact quantities will depend on size of area)



IMPORTANT: Check the weather. Make sure that there is no rain forecasted for 24 hours prior to installation of the polymeric sand and that the temperature will remain above 32°F until the sand is completely dry.

1 Determine size and shape of the Tree Cookie Flooring area you are going to install. Use spray paint to outline the area.

- The most basic shape is a square. More advanced shapes are possible by building additional framework.

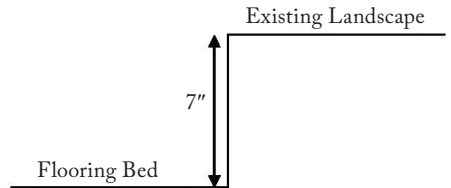


2 Once you have determined the area and shape, use stakes to rope off the area. **Be sure you have the utilities marked for excavation before you ever put a shovel into soil.**

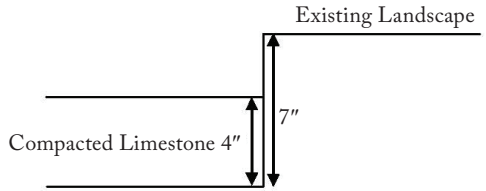
3 Using a spade and shovel, dig out the area until it is minimum 7" below the intended height of the final tree cookie floor. Always try to dig clean 90° edges. (The depth you will need depends on your local environment, i.e. soil type, weather, and drainage. Consult a local contractor if needed.)

4 Level the surface to a uniform depth of 7" below the surrounding surface. To ensure adequate drainage, you should have a slope of at least 1/8" per linear foot (1/4" slope per linear foot is often recommended). Use a Tamper to compact the soil.

5 Fill the bottom of the hole with unfiltered limestone or another drainage substrate.



6 Use a tamper or compactor to compress the limestone to a uniform minimum depth of 4". You may wish to use a depth of 6"-10" if you have plastic soils with a high shrink and swell capacity.

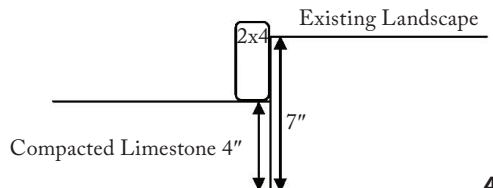


7 To stabilize the area, make a frame around the perimeter with 2x4 boards (actual dimensions (1½" x 3½"). The frame should be made with wood intended to be permanently installed in the ground.

- Please check both local building regulations as well as playground safety regulations to make sure you are using the proper type of wood for your frame.

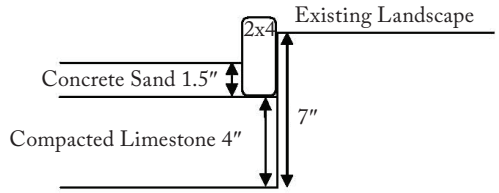
8 Secure the frame into the ground using stakes. Next, carefully back-fill dirt against the outside edge of the frame, this adds additional support and stability.

IMPORTANT: The top edges of the 2x4 boards should be slightly above the remainder of the landscape surface to allow for settling and drainage.

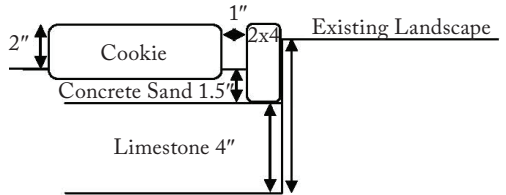


- 9 Add a layer of Concrete Sand and screed to a uniform depth of 1½". Make sure the layer is as level as possible.

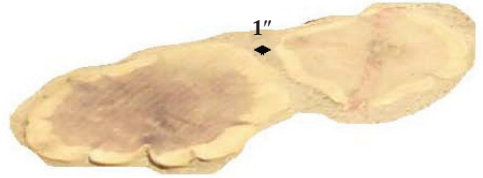
You are now ready to begin placing the Tree Cookies.



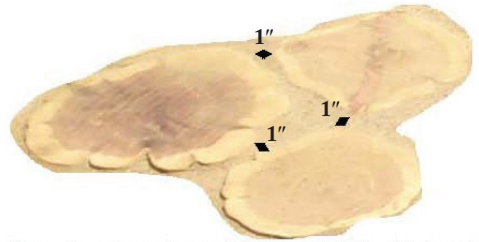
- 10 Place first cookie into the sand, pushing it about ½" into the sand. This should leave about a 2" gap between the sand and the top of the tree cookies, this space will be used for the polymeric sand.



- 11 Place second cookie a distance of no more than 1" apart from the first cookie. Once again, make sure the top of the Tree Cookie is about 2" above the sand level and is level with the first cookie.



- 12 Place the third cookie no more than 1" from the first and second cookies, start forming a square shape. Once again, make sure the top of the Tree Cookie is about 2" above the sand level and is level with the first cookie.



- 13 Repeat Step 12 until you have filled the entire frame with cookies. Placing each cookie no more than 1" from the other cookies, continue following the square pattern, making sure the tops of each Tree Cookie is about 2" above the sand level and all cookies are level with each other.



You have now finished laying Tree Cookies into the frame.

IMPORTANT: Check the weather. Make sure that there is no rain forecasted for 24 hours prior to installation of the polymeric sand and that the temperature will remain above 32°F until the sand is completely dry. Follow all directions on the packaging of the polymeric sand you are using.

14 Make sure all Tree Cookies are firmly compacted into the sand layer and that the Tree Cookie Flooring surface is completely dry.

15 Spread polymeric sand mix uniformly over the surface. Using a push broom, use short strokes to sweep the polymeric sand into the joints, filling them completely, to 1/8" below tops of the cookies.

- Sweeping over long distances can compromise the integrity of the mix.

16 Manually compact the cookies to eliminate any remaining voids to ensure a dense and solid joint.

17 Sweep all loose sand and polymeric sand mix from tops of cookies using a broom or power blower. Failure to do so will result in a rough play surface.

18 Gently and lightly mist the polymeric mix as directed. Use a very fine and continuous mist that does not displace the polymeric sand.

- Avoid flooding area and causing run-off. If you see white foam on the pavers you have added the water too fast.
- Using a small screwdriver, verify the progress of the wetness in several areas by emptying a small portion of the joint.
- **Stop** watering once the joints are moistened 1.5" deep.

Since Nature Explore has no control over surface preparation, application or installation of Tree Cookie Flooring, Nature Explore cannot guarantee the results.



19 Polymeric sand must dry completely after initial wetting to ensure a solid joint and long-term stability.

- Read instructions on polymeric sand mix you are using, drying time should be between 12 and 48 hours depending on brand and weather conditions.
- If there is potential for the surface to be exposed to water before it is completely dry, protect the area with a tarp. Remove the tarp as soon as the risk has passed.

You have now completed your Tree Cookie Flooring.

JOINT REPLACEMENT

- 1** Empty the old joint completely using a pressure washer.
- 2** Install new polymeric as directed.



Important Facts About Natural Wood Products

Nature Explore field-tested components are made of natural materials that bring children in close contact with the beautiful patterns and colors of nature. Due to the nature of raw and untreated wood, you will notice graining, knots, checking (a natural cracking process that occurs as wood releases moisture across the annual growth rings), and in rare instances, insects. This is not a defect in the product, but a natural process that should be expected. Additionally, unfinished wood will naturally develop a beautiful silvery-gray patina over time.

Below are some examples of what you may encounter and can expect with your order:

Natural Cracking and Checking



Knots, Branches, Etc.



Extending the Life of your Natural Wood Products

Nature Explore items such as Tree Cookies, Natural Balance Beams, Marimbas, At-Ease Benches, etc. are natural, untreated wood products that require regularly scheduled, routine maintenance in order to maintain safety and extend the life of the item. Some items will arrive with an initial coat of sealant while others are left untreated (please refer to product overview & specifications). It is our recommendation that you apply an initial sealant and maintain a schedule of reapplication annually to biannually to extend the life of your product. When considering treatment options we advise seeking the expertise of local wood workers, lumber yards, general contractors, etc. to understand which options are most effective and safe for your area. Routine sanding of the tops, sides and interior (if applicable) surfaces of the item will minimize splinters, reduce the chance of mildew and extend the life of your product. As your natural wood product becomes acclimated to your local environment, and sometimes even occurring in the transit process, a mildew discoloration will appear. You can reduce the risk of continued mildewing by making sure your item is installed on a surface with adequate drainage such as mulch or gravel. Installing or placement directly on grass surfaces is not recommended as it allows moisture to be trapped underneath.

Nature Explore Classroom resources are designed to bring children closer to nature and help them develop life-long learning skills. To ensure safety and effectiveness, please be sure to follow the instructions for installation, building codes, warnings, and maintenance. Failure to follow all of the instructions will void any warranty offer. Furthermore, even Nature Explore Classroom resources installed and maintained in accordance with the instructions can present hazards to children in the absence of adequate supervision.

Depending on the location and nature of the outdoor classroom, the supervisors may be paid professionals (full-time park or school/child care facility staff), paid seasonal workers (college or high school students), volunteers (PTA members), or the parents of the children playing in the outdoor classroom. The quality of the supervision depends on the quality of the supervisor's knowledge of safe play behavior. Therefore, supervisors should understand the basics of safety in an outdoor classroom.

Outdoor classroom supervisors should be aware that not all equipment and items are appropriate for all children who may use the outdoor classroom. Posted signs or labels indicating the appropriate age of the users should be checked before play begins, and supervisors should direct children to equipment appropriate for their age. It is also very important to recognize that preschool-age children require more attentive supervision than older children do.

Building Codes:

Variations in building codes, specific local development covenants, or site conditions may require modification to the installation of the product. Outdoor classroom owners are ultimately responsible for complying with all applicable permits, building codes and other regulatory requirements, and should review their outdoor classroom with local building inspectors. All appropriate building permits should be obtained prior to starting installation.

Liability:

Nature Explore shall have no liability or responsibility for actions or inaction in connection with any Nature Explore item or any damage or liability that arises during the construction and/or use. Always read and observe all safety precautions provided by the Consumer Product Safety Council regarding toy safety, playground safety, and any other applicable programs. Likewise, always read and observe all safety precautions provided by any tool or equipment manufacturer consulted during installation.